



Connexin 31.3 Polyclonal Antibody

Catalog No	YP-Ab-17000
Isotype	IgG
Reactivity	Human;Rat;Mouse;
Applications	WB;ELISA
Gene Name	GJC3
Protein Name	Gap junction gamma-3 protein
Immunogen	The antiserum was produced against synthesized peptide derived from human GJC3. AA range:151-200
Specificity	Connexin 31.3 Polyclonal Antibody detects endogenous levels of Connexin 31.3 protein.
Formulation	Liquid in PBS containing 50% glycerol, 0.5% BSA and 0.02% sodium azide.
Source	Polyclonal, Rabbit,IgG
Purification	The antibody was affinity-purified from rabbit antiserum by affinity-chromatography using epitope-specific immunogen.
Dilution	Western Blot: 1/500 - 1/2000. ELISA: 1/40000. Not yet tested in other applications.
Concentration	1 mg/ml
Purity	≥90%
Storage Stability	-20°C/1 year
Synonyms	GJC3; GJE1; Gap junction gamma-3 protein; Connexin-30.2; Cx30.2; Connexin-31.3; Cx31.3; Gap junction epsilon-1 protein
Observed Band	28kD
Cell Pathway	Cell membrane ; Multi-pass membrane protein . Cell junction, gap junction .
Tissue Specificity	CNS specific. Expression is restricted to brain, spinal cord, and sciatic nerve. According to PubMed:12881038, expression is abundant in skeletal muscle, liver, and heart, and to a minor degree in pancreas and kidney.
Function	function:One gap junction consists of a cluster of closely packed pairs of transmembrane channels, the connexons, through which materials of low MW diffuse from one cell to a neighboring cell.,similarity:Belongs to the connexin family. Gamma-type subfamily.,subunit:A connexon is composed of a hexamer of connexins.,tissue specificity:CNS specific. Expression is restricted to brain, spinal cord, and sciatic nerve. According to PubMed:12881038 expression is abundant in skeletal muscle, liver, and heart, and to a minor degree in pancreas and kidney.,
Background	This gene encodes a gap junction protein. The encoded protein, also known as a connexin, plays a role in formation of gap junctions, which provide direct connections between neighboring cells. Mutations in this gene have been reported to be associated with nonsyndromic hearing loss.[provided by RefSeq,



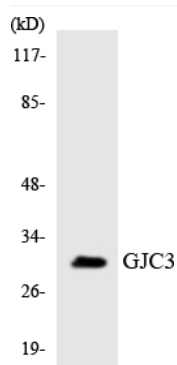
Feb 2010],

matters needing attention

Avoid repeated freezing and thawing!

Usage suggestions

This product can be used in immunological reaction related experiments. For more information, please consult technical personnel.

Products Images

Western blot analysis of the lysates from K562 cells using GJC3 antibody.